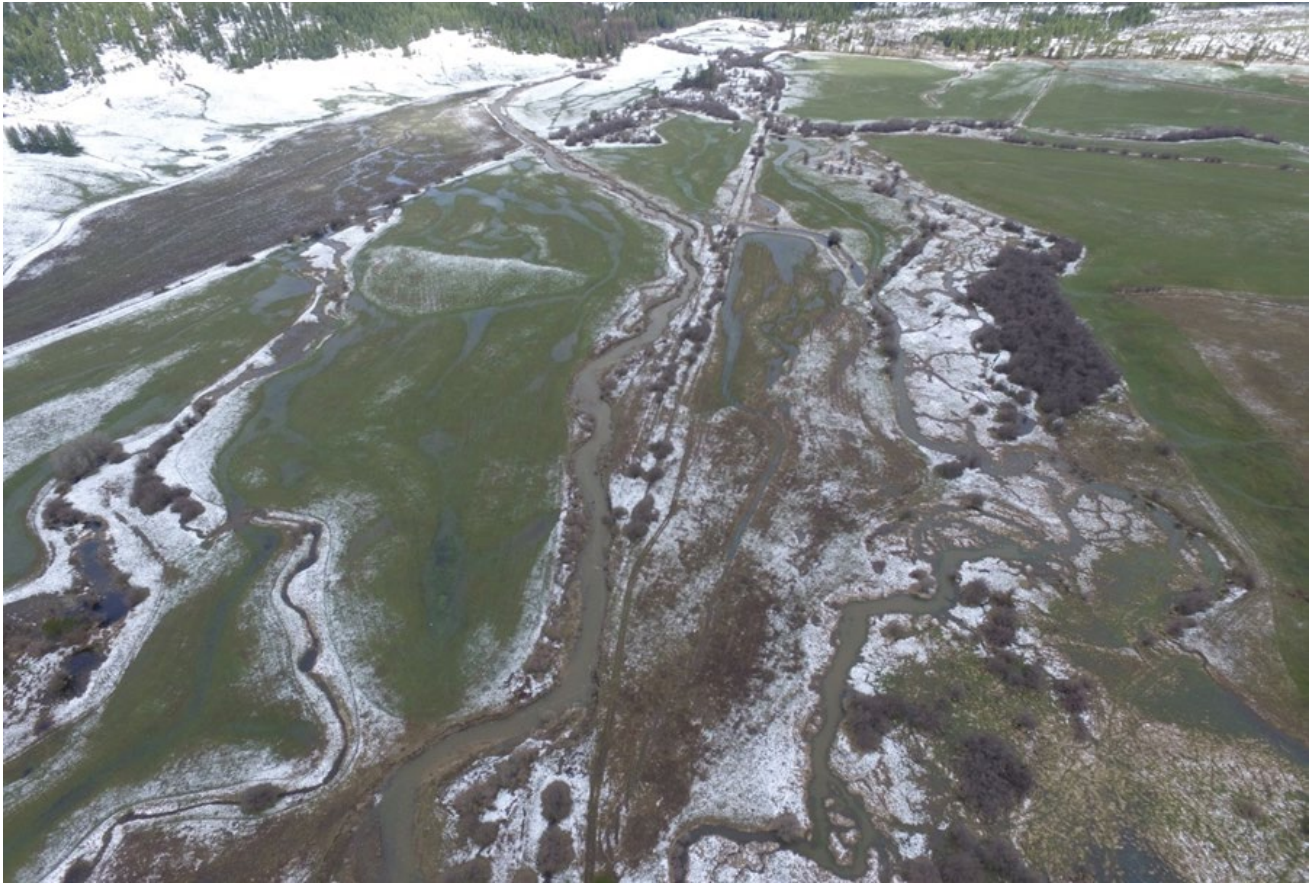




Picture 1. Aerial photo of project site June, 2017.



Picture 2. Constructed relief channel Aug, 2016.



*Picture 3. Before picture of project site during runoff event at approximately 280cfs, February 2016.*



*Picture 4. After picture of project site during runoff event at approximately 300cfs, March 2017.*



Picture 5. Portion of the channelized stream within project site prior to restoration actions. Photo taken during early summer of 2010.



Picture 6. Portion of the newly activated relict channel and a PIT tag monitoring station after restoration was initiated, April 2017. This monitoring station was installed to determine migration timing and rearing locations of fluvial redband trout within the project reach. Protected tree plantings are in the background of the photo.